



Soar



Share



Strive



Sparkle



School Expansion Update

May 2019



Agenda

- Introductions
- Where we are currently
- What will the plans for the school look like moving forward?
- Class structure moving forward
- Other considerations
- Any questions?

Introductions



Where we are currently

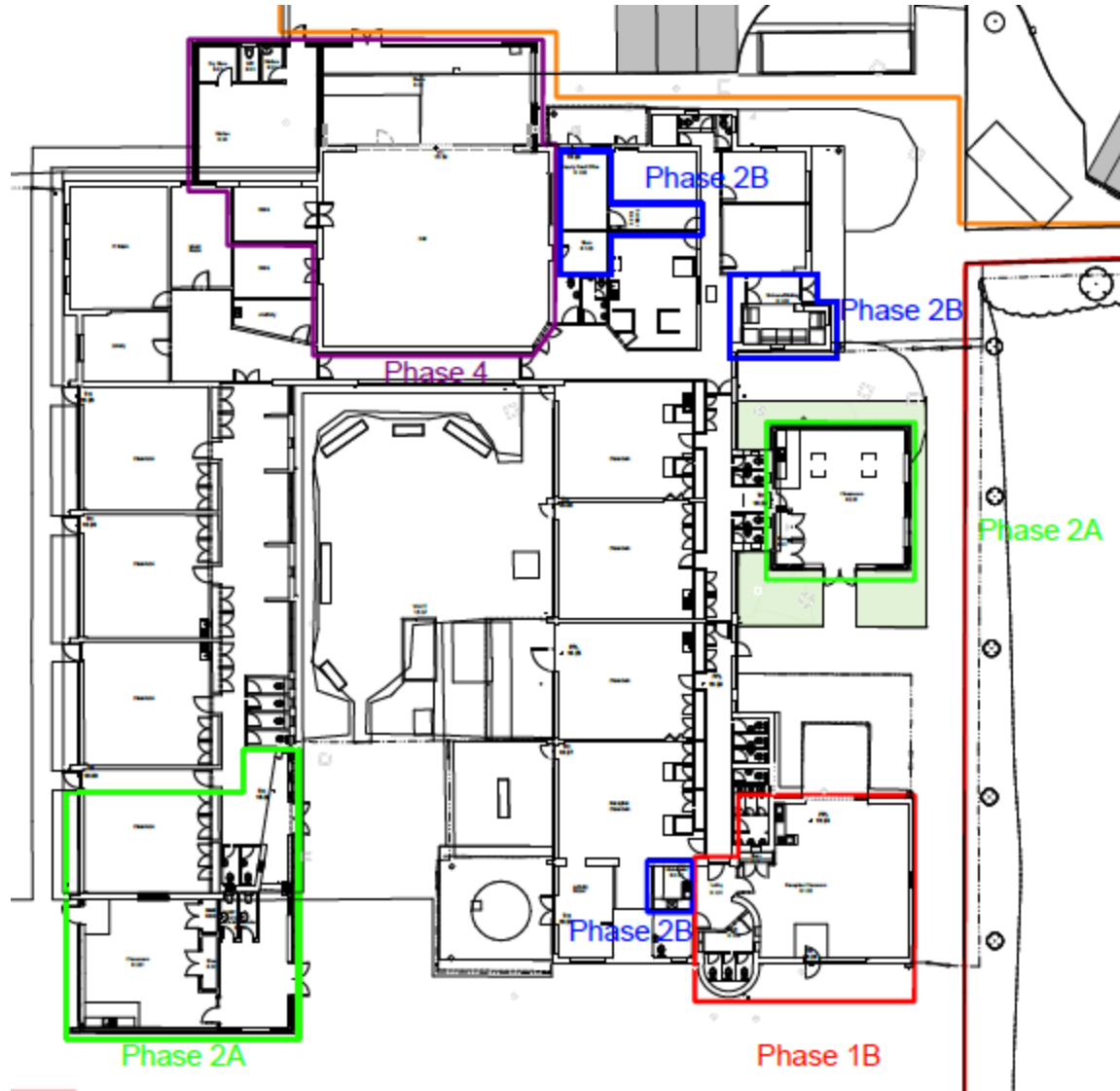
- Planning permission for the relocation of Little Foxes playgroup has been accepted.
- Work on the new Playgroup building will begin during May half term.
- Little Foxes Playgroup will vacate the current Playgroup room at the end of the summer term.
- The current Little Foxes provision will be refurbished over the summer holiday.
- It will be converted into a new Reception classroom and outdoor provision ready to welcome our new YR children on September 3rd.

■ What will the plans for the school look like moving forward?

- The Local Authority will share the detailed plans in an open drop in session in the school hall from 3:15 – 6:00pm on Wednesday 22nd May.
- Key additions are as follows:
 - 3 new classrooms and cloakrooms
 - A larger school hall/ studio space
 - A new school kitchen
 - A new front entrance/ welcome area
 - DHT office and storage room relocated

■ The plans

What the site will look like and the phases



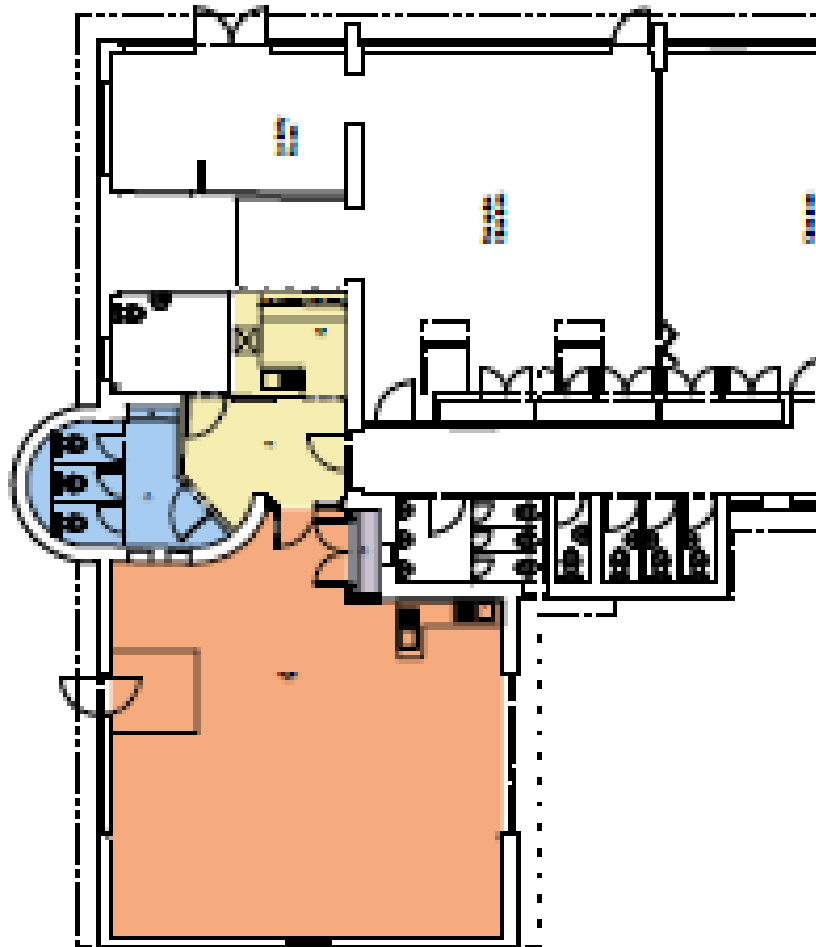
■ The plans

What the site will look like



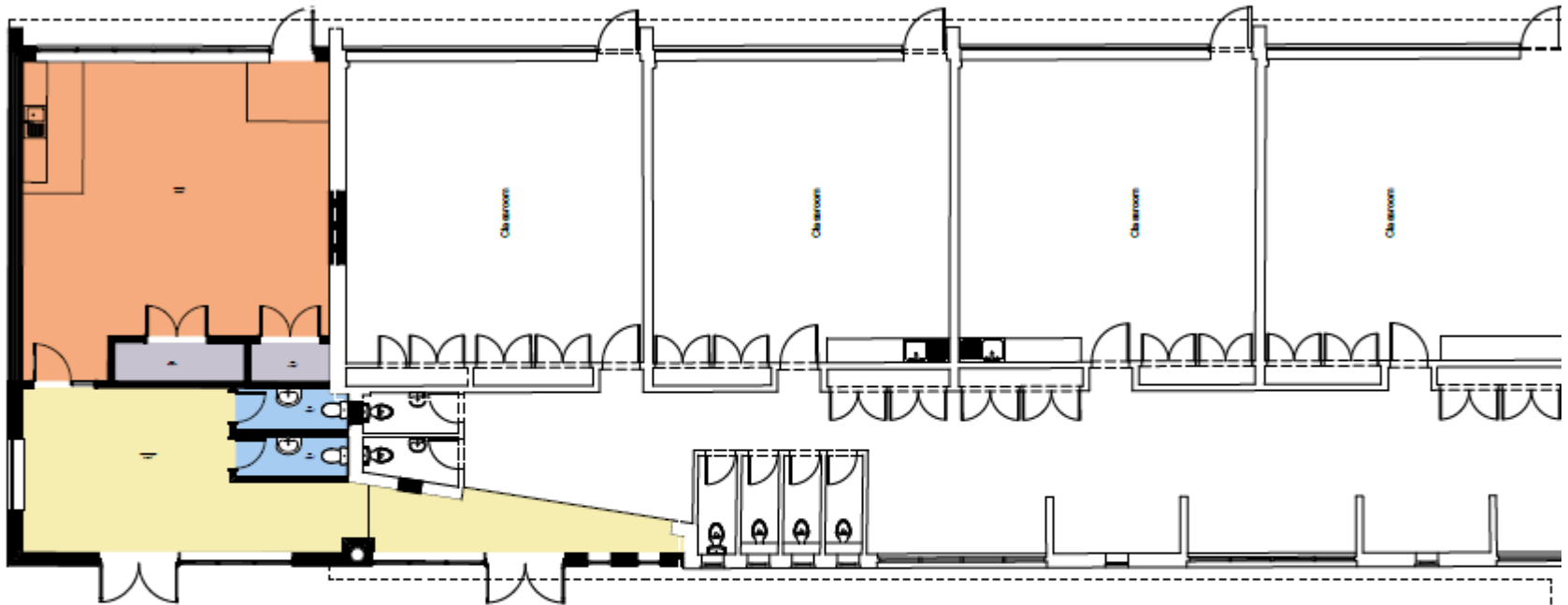
■ The plans

Classrooms: Current Little Foxes



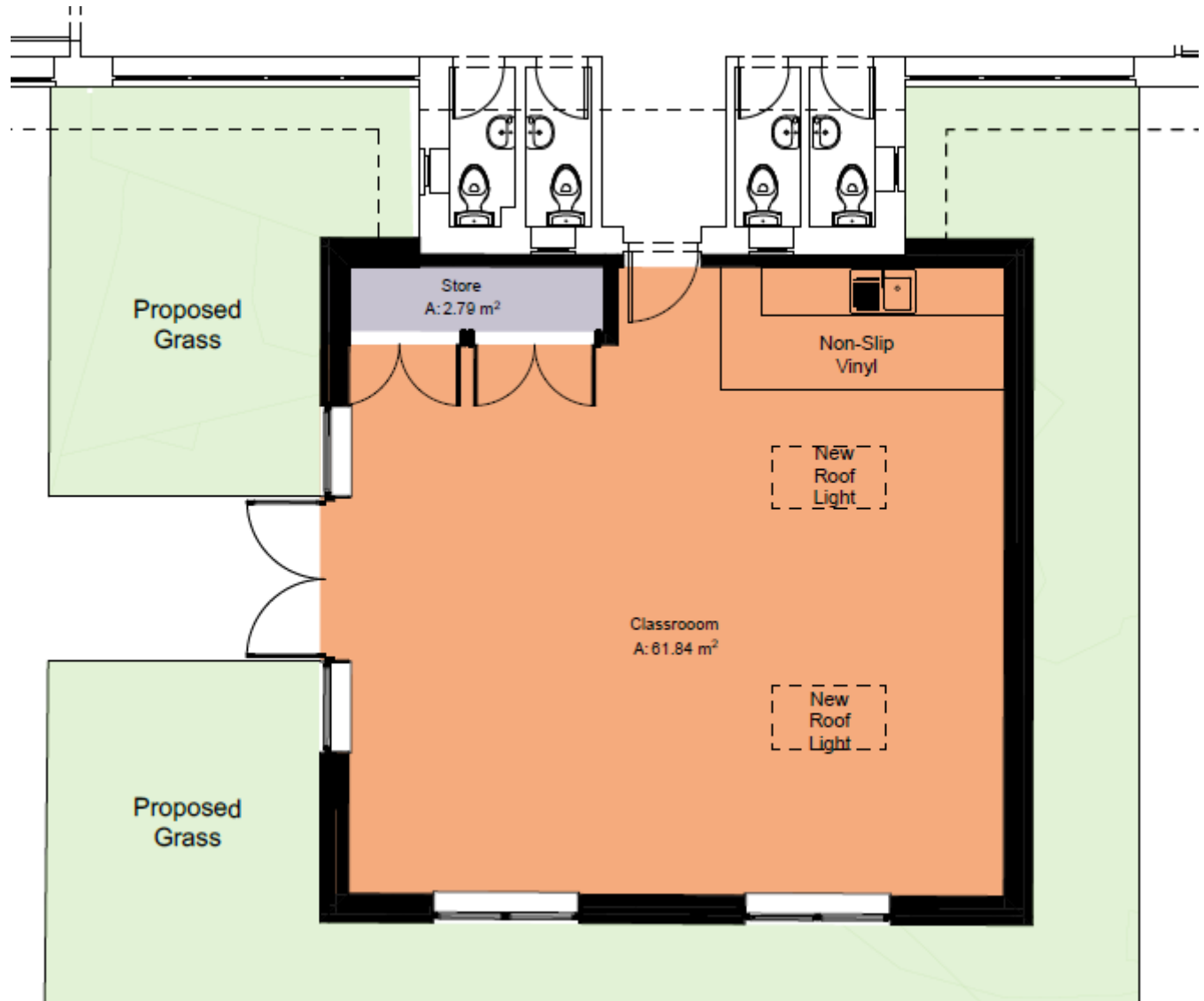
■ The plans

Classrooms:



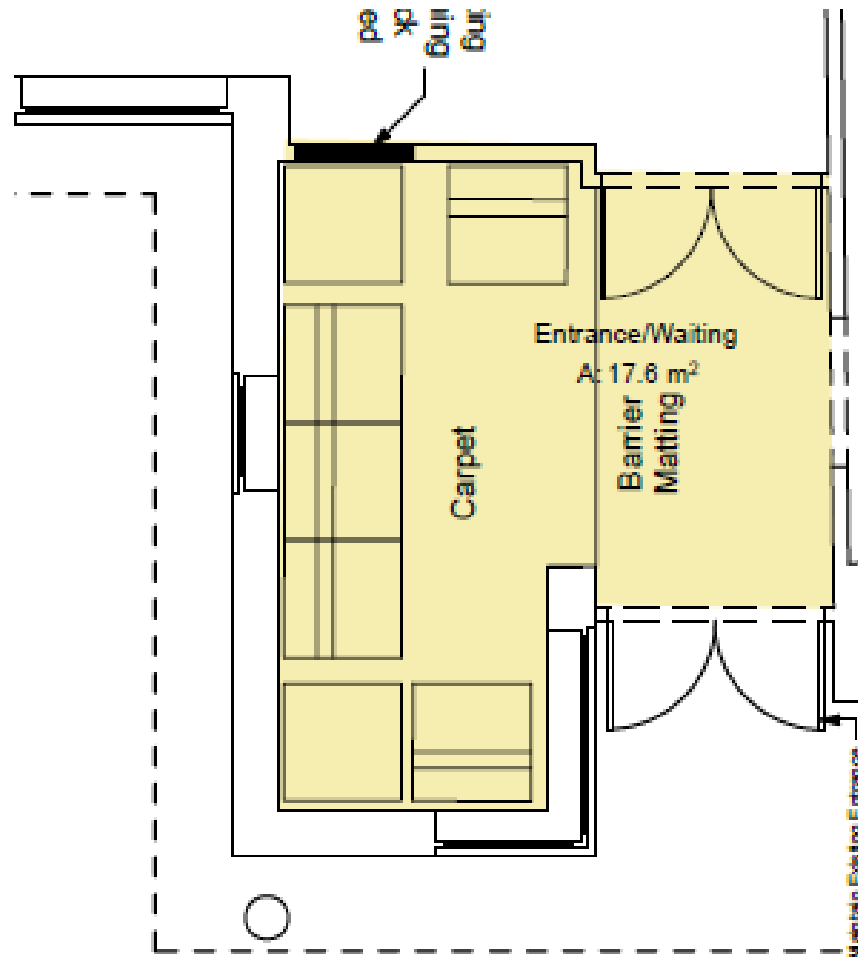
■ The plans

Classrooms:



■ The plans

Front entrance:



Class Structure



What could our Classes look like

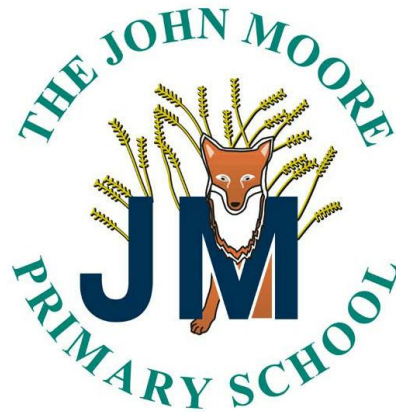
- We can only have 30 Children in a class in YR and Key Stage I

Year	Class structure
September 2019	Year R x 2 classes (1 of 23 and 1 of 22) Year x 1 of 30 Year 2 x 1 of 30 Year 3 x 1 of 30 Year 4 x 1 of 30 Year 5 x 2 of 30 each Year 6 x 1 of 30
September 2020	Year R x 1 of 30 Year R/ 1 x 1 of 30 Year 1 x 1 of 30 Year 2 x 1 of 30 Year 3 x 1 of 30 Year 4 x 1 of 30 Year 5 x 1 of 30 Year 6 x 2 of 30 each



Model for 2025
YR x 1 of 30
YR/1 x 1 of 30
Y1 x 1 of 30
Y2 x 1 of 30
Y2/3 x 1 of 30
Y3 x 1 of 30
Y4 x 1 of 30
Y4/5 x 1 of 30
Y5 x 1 of 30
Y6 x 2 (1 of 23 and 1 of 22)

Other Considerations



- **Possibility of appeals:**

- We are aware that the model that has been proposed may not be realistic in actuality as the new arrivals into the new estate and school may not fall neatly into an additional 15 children into Reception. We recognise that there is a possibility that there will be families that gain a place in Reception that also have siblings in the older year groups and that they will appeal for a place for these pupils.
- We are working closely with the LA admissions team to discuss the impact that taking on additional pupils would have on the pupils currently in the school, on the staff and on the school budget. We have asked them to support us during this time of transition and have asked that we only take on additional pupils into KS2 in exceptional circumstances and that they also support us with up front funding to support any additional pupils.

Any questions?

- Any questions?